



openFinance API Framework
Implementation Guidelines for Extended Services

Push Account Information Services

Version 1.0

21 December 2021

License Notice

This Specification has been prepared by the Participants of the openFinance Taskforce*. This Specification is published by the Berlin Group under the following license conditions:

- "Creative Commons Attribution-NoDerivatives 4.0 International Public License"



This means that the Specification can be copied and redistributed in any medium or format for any purpose, even commercially, and when shared, that appropriate credit must be given, a link to the license must be provided, and indicated if changes were made. You may do so in any reasonable manner, but not in any way that suggests the licensor endorses you or your use. In addition, if you remix, transform, or build upon the Specification, you may not distribute the modified Specification.

- Implementation of certain elements of this Specification may require licenses under third party intellectual property rights, including without limitation, patent rights. The Berlin Group or any contributor to the Specification is not, and shall not be held responsible in any manner for identifying or failing to identify any or all such third party intellectual property rights.
- Any right, title and interest in and to the copyright and all related rights in topic-related Scheme Rulebooks, belong to the respective Scheme Manager (amongst others, the European Payments Council AISBL - EPC).
- The Specification, including technical data, may be subject to export or import regulations in different countries. Any user of the Specification agrees to comply strictly with all such regulations and acknowledges that it has the responsibility to obtain licenses to export, re-export, or import (parts of) the Specification.

* The openFinance Taskforce brings together participants of the Berlin Group with additional European banks (ASPSPs), banking associations, payment associations, payment schemes and interbank processors.

Contents

| | | |
|-------|---|----|
| 1 | Introduction..... | 1 |
| 2 | Character Sets and Notations..... | 5 |
| 2.1 | Additional Notations..... | 5 |
| 3 | Transport Layer..... | 6 |
| 4 | Application Layer: Guiding Principles..... | 6 |
| 4.1 | Signing Messages at Application Layer..... | 6 |
| 4.2 | Additional Error Information..... | 6 |
| 4.3 | TPP Interface API Structure..... | 7 |
| 4.4 | API Access Methods..... | 8 |
| 4.4.1 | Subscription Endpoint..... | 9 |
| 4.4.2 | Push Account Information Endpoint..... | 12 |
| 4.5 | HTTP Response Codes..... | 13 |
| 4.6 | SCA related Hyperlinks..... | 14 |
| 4.7 | Subscription and Subscription Entry Status..... | 15 |
| 4.8 | Resource Availability..... | 15 |
| 4.9 | Model for direct access for Corporates..... | 15 |
| 5 | Subscription for Account Information Service..... | 16 |
| 5.1 | Initiate Subscription Request..... | 16 |
| 5.1.1 | Generic Request..... | 16 |
| 5.1.2 | Example Push Account Entry Service..... | 20 |
| 5.1.3 | Example Push Account Statement Subservice..... | 21 |
| 5.1.4 | Example Push Balance Information Subservice..... | 22 |
| 5.1.5 | Example Push RTP Information Subservice..... | 22 |
| 5.2 | Read Subscription Details..... | 23 |
| 5.3 | Read Subscription Status..... | 26 |
| 5.4 | Add a Subscription Entry..... | 28 |
| 5.5 | Read Subscription Entry Details..... | 31 |
| 5.6 | Read Subscription Entry Status..... | 33 |
| 5.7 | Cancel Subscription Request..... | 35 |
| 5.8 | De-activate Subscription Entry Request..... | 37 |
| 6 | Push Account Information..... | 39 |



| | | |
|------|--|----|
| 6.1 | Push Account Information Message Flows | 39 |
| 6.2 | Push Account Information Messages..... | 39 |
| 7 | Complex Data Types..... | 43 |
| 7.1 | Subscription Entry..... | 43 |
| 7.2 | Push Account Entry Parameters | 44 |
| 7.3 | Account Entry Trigger Criteria | 45 |
| 7.4 | Push Account Statements Parameters | 47 |
| 7.5 | Account Statement Trigger Criteria | 47 |
| 7.6 | Push Balance Parameters..... | 48 |
| 7.7 | Balance Trigger Criteria..... | 48 |
| 7.8 | pushRtpParameters..... | 49 |
| 7.9 | RTP Trigger Criteria..... | 50 |
| 7.10 | Transactions | 50 |
| 7.13 | Subscription Status..... | 55 |
| 7.14 | Subscription Entry Status | 55 |
| 7.15 | Credit Debit Code | 56 |
| 7.16 | Account Entry Status | 56 |
| 7.17 | Mime Type Code | 56 |
| 7.18 | Links..... | 57 |
| 7.19 | Lean Account Report..... | 60 |
| 8 | References | 61 |



1 Introduction

1.1 From Core XS2A Interface to openFinance API

With [PSD2] the European Union has published a directive on payment services in the internal market. Among others [PSD2] contains regulations on services to be operated by so called Third Party Payment Service Providers (TPP) on behalf of a Payment Service User (PSU). These services are

- Payment Initiation Service (PIS) to be operated by a Payment Initiation Service Provider (PISP) TPP as defined by article 66 of [PSD2],
- Account Information Service (AIS) to be operated by an Account Information Service Provider (AISP) TPP as defined by article 67 of [PSD2], and
- Confirmation on the Availability of Funds Service (FCS) to be used by a Payment Instrument Issuing Service Provider (PIISP) TPP as defined by article 65 of [PSD2].

To implement these services (subject to PSU consent) a TPP needs to access the account of the PSU. The account is managed by another PSP called the Account Servicing Payment Service Provider (ASPSP). To support the TPP in accessing the accounts managed by an ASPSP, each ASPSP has to provide an "access to account interface" (XS2A interface). Such an interface has been defined in the Berlin Group NextGenPSD2 XS2A Framework.

This XS2A Framework is now planned to be extended to extended services. This interface is addressed in the following as **openFinance API**. This openFinance API differs from the XS2A interface in several dimensions:

- The extended services might not rely anymore solely on PSD2.
- Other important regulatory frameworks which apply are e.g. GDPR.
- The openFinance API can address different types of **API Clients** as access clients, e.g. TPPs regulated by an NCA according to PSD2, or corporates not regulated by an NCA.
- The extended services might require contracts between the access client and the ASPSP.
- While the client identification at the openFinance API can still be based on eIDAS certificates, they do not need to be necessarily PSD2 compliant eIDAS certificates.
- The extended services might require e.g. the direct involvement of the access client's bank for KYC processes.

Note: The notions of API Client and ASPSP are used because of the technical standardisation perspective of the openFinance API. These terms are analogous to "asset broker" and "asset holder" resp. in the work of the ERPB on a SEPA API access scheme.



Note: In implementations, the API services of several ASPSPs might be provided on an aggregation platform. Such platforms will be addressed in the openFinance API Framework as "API provider".

The following account access methods are covered by this framework:

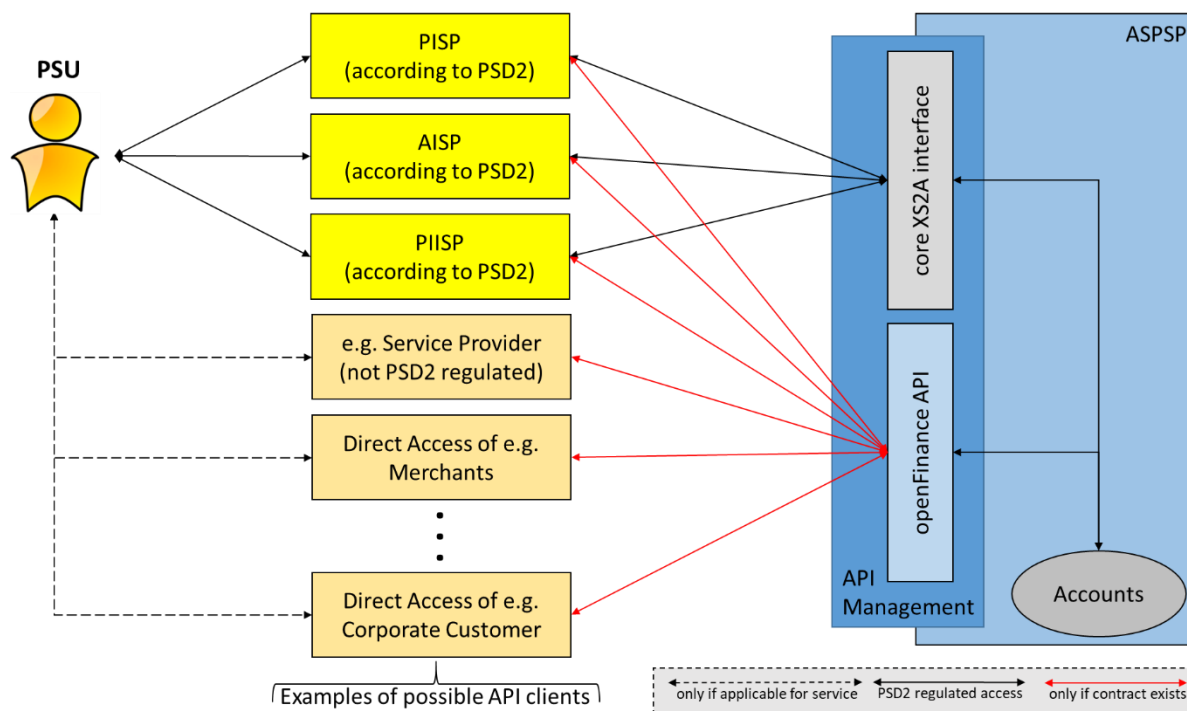


Figure 1: Core XS2A interface and openFinance API

The ASPSP may restrict the access to the services offered at its openFinance API and require dedicated onboarding. The requirements for the rights to access to services offered at the openFinance API are out of scope of this document. These requirements are described in a dedicated operational rules document [oFA-OR-ADM].

1.2 Push Account Information Services

The core XS2A Interface as introduced above is for Account Information Services (AIS) in general based on a "pull philosophy": The TPP can **pull** AIS related information from the ASPSP once the PSU has given his/her consent and the PSU is authenticated by SCA methods provided by the ASPSP. Triggers for pulling can be the PSU as such (PSU present at the TPP's application asking for a refresh) or a 4 times offline (PSU not present) access of the TPP to the PSU's accounts per day.

A first "push functionality" was introduced in the core XS2A interface for informing the TPP about technical status changes of major API resources which have been submitted by the TPP itself, e.g. an information that a payment has been authorised by the PSU in a decoupled SCA process. The core XS2A interface does not support pushing new financial account related information like new account entries for e.g. incoming instant payments.

It is now planned to introduce a service to enable ASPSPs to inform PSUs via API Client systems about account information into the openFinance API Framework. This service might require a contract between the API Client and the ASPSP. It is called in the following **Push**

Account Information Service. The openFinance API Framework will support several subservices from the beginning.

As a first subservice, the pushing of account entries is standardised. This subservice is called **Push Account Entry Service**. The Push Account Entry service will be available in two variants:

- Push an account entry directly to an **entry URI** provided by the API Client, or
- Push a trigger for the payment transaction received to a **trigger URI** provided by the API Client. In a next step, the TPP would need to pull the transaction data, using an underlying PSU consent.

A next subservice is a service to push account statements. The statements are containing more information as the transaction reports as provided today within the PSD2 NextGenPSD2 API. This subservice is called **Push Account Statement Service**. This service will allow to transport account statements either in MT94x or in camt.05x format. **RFU:** In future, also JSON based statements will be supported by this standard.

A third subservice is pushing balance related information, e.g. inform the API Client in case a certain balance threshold is met. This subservice is called **Push Balance Information Service**.

A fourth subservice is pushing incoming RTP Requests, e.g. forward all incoming RTP Requests which are due in a certain short time frame or warn about RTP Request reaching the expiry date. This subservice is called **Push RTP Information Service**.

Please note that all these services come with a subscription by the PSU, which is initiated by the API Client. Each subservice might be triggered by events, pre-defined timeslots etc. The trigger criteria, or "criteria" in short in this text, are agreed on during the subscription process.

Remark: Even if the subscription model followed within this service is a GDPR like consent between ASPSP and PSU on forwarding account information data to a third party, PSD2 requirements might still apply on e.g. SCA related periods. This is under review and up to API Access Definitions or bilateral commercial contracts between API Client and ASPSP. Anyhow, variants where just e.g. hyperlinks pointing to new account information or static trigger text are pushed to the API Client might be easier implemented from a legal/contractual point of view.

Note: The Push Account Information Service for the openFinance API is built in such a way that it can also be used in a direct PSU – ASPSP interface. Some remarks specific to such an implementation are integrated in this document.

1.3 Document Structure

This document specifies the Push Account Information Services in detail.

Section 2 and Section 3 give generic information on character sets and the transportation layer. Section 4 is providing specific, but still abstract information on the application layer of this service like service API access methods or service specific error codes.

Section 5 defines the API for subscribing to Push Account Information Services in detail. Section 6 shortly defines the push messages to be used towards the webhooks registered

within the subscription of the related Push Account Information Service. Section 7 then provides the complex data types needed for this service.

1.4 Document History

| Version | Change/Note | Approved |
|---------|--|-------------------|
| 0.84 | Draft for pre-consultation with the Advisory Group | 23 September 2021 |
| 0.9 | Draft for public market consultation | 11 October 2021 |
| 1.0 | Final editorial corrections | 16 December 2021 |



2 Character Sets and Notations

For definition on character Sets and Notations as well as for request and response notations refer to Chapter 2 of [XS2A-IG].

2.1 Additional Notations

As an extension of the notations in Chapter 3 in [XS2A-IG], the following conditions may be used. The additional conditions apply to both, requests from the client to the server as well as responses from the server to the client:

| Attribute | Type | Condition | Description |
|-----------|------|----------------|-------------|
| | | {OR | |
| | | OR | |
| | | OR} | |
| | | {Or – Optional | |
| | | Or – Optional | |
| | | Or – Optional} | |

- {Or: The **first** element in a sequence of elements of which **exactly one** has to be included.
- Or: An element in a sequence of elements of which **exactly one** has to be included. The element is **neither the first nor the last** within this sequence.
- Or}: The **last** element in a sequence of elements of which **exactly one** has to be included.
- {Or – Optional: The **first** element in a sequence of elements of which **at most one** may be included.
- Or – Optional: An element in a sequence of elements of which **at most one** may be included. The element is **neither the first nor the last** within this sequence.
- Or – Optional}: The **last** element in a sequence of elements of which **at most one** may be included.

3 Transport Layer

For details on the transport Layer, please refer to Chapter 3 in [XS2A-IG].

Note: The ASPSP is required to use the same web site certificate as client certificate towards the API Client as used as web site certificate in the corresponding API Client – ASPSP XS2A interface as defined in [oFA-OR-ADM].

4 Application Layer: Guiding Principles

4.1 Signing Messages at Application Layer

The same conditions on signing messages by the TPP as defined in [XS2A-IG] apply to the subscription process, cp. Section 5.

4.2 Additional Error Information

Push Account Information service specific error codes are as follows:

| Message Code | HTTP Response Code | Description |
|---------------------------------|--------------------|---|
| PRIOR_SUBSCRIPTION_AVAILABLE | 409 | The PSU/Corporate initiating the Push Account Information Service subscription already holds a subscription in the quadruple API Client/PSU/ASPSP/subservice or API Client/Corporate/ASPSP/subservice respectively or in the triple API Client/ASPSP/subservice in the case of direct access. |
| SECONDARY_URI_NOT_SUPPORTED | 400 | An API Client is trying to register a secondary Push URI within a Push Account Information subscription, which is not supported by the ASPSP. |
| MIME_TYPE_NOT_SUPPORTED | 400 | An API Client is trying to define a Push Account Information subservice with one or several mime types, where none of the mime types is supported by the ASPSP for this subservice. |
| LIMIT_FOR_BALANCE_NOT_SUPPORTED | 400 | The subscription for a Push Balance Information Subservice is asking to involve a credit limit into the balance selection criteria, where the related |

| Message Code | HTTP Response Code | Description |
|-------------------------------|--------------------|--|
| | | balance does not support to include a related credit limit of the account. |
| ACCOUNT_CURRENCY_NOT_MATCHING | 400 | The API Client initiated a subscription where an amount is involved which is not matching the currency of the addressed account. |
| BALANCE_TYPE_NOT_SUPPORTED | 400 | The API Client initiated a subscription for a balance type that is not supported for the addressed account by the ASPSP. |

4.3 TPP Interface API Structure

This specification makes no requirements on the local endpoint structure of the API Client, i.e. the API Client is free to define host, service and transaction identifiers within the API-Notification-URI implementation. The only restriction is, that the domain within the URI equals the domain as contained in the API Client eIDAS web site certificate used for identification towards the ASPSP, cp. Section 3. Every pushing of account entries is done as a POST command towards the primary address

```
https://<apiClientPrimaryPushURI>
```

or the secondary address

```
https://<apiClientSecondaryPushURI>
```

using additional content parameters defined in JSON encoding.

For security reasons, it shall be ensured that the `apiClientPrimaryPushURI` and `apiClientSecondaryPushURI` as introduced above are secured by the API Client eIDAS QWAC used for identification of the API Client as described in [oFA-OR-ADM]. The following applies:

URIs which are provided by API Clients in the PUSH URIs shall comply with the domain secured by the eIDAS QWAC certificate of the API Client in the field CN or SubjectAltName of the certificate. Please note that in case of example-TPP.com as certificate entry `apiClientPrimaryPushAPI` or `apiClientSecondaryPushAPI` like

- www.example-TPP.com/xs2a-client/v1/ASPSPidentification/psu-account-id/entries
- `pushentries.example-TPP.com/xs2a-client/v1/ASPSPidentification/psu-account-id/entries`

would be compliant.



Wildcard definitions shall be taken into account for compliance checks by the ASPSP.

Example: <https://pushaccountgateway.tpp-name.eu>, where tpp-name.eu is the domain of a TPP as API Client.

The Push Account Information Service consists of two components:

- the **subscription process** to activate (or de-activate) the pushing of account entries on a dedicated account and
- the **actual pushing** of account information.

The structure of the request/response is described according to the following categories

- Path: Attributes encoded in the Path (only applicable for the subscription process)
- Query Parameters: Attributes added to the path after the ? sign as process steering flags or filtering attributes for GET access methods. Query parameters of type Boolean shall always be used in a form query-parameter=true or query-parameter=false.
- Header: Attributes encoded in the HTTP header of request or response
- Request: Attributes within the content parameter set of the request
- Response: Attributes within the content parameter set of the response, encoded in JSON

The HTTP response codes, which might be used in openFinance API services, are specified in Section 4.5 They are not repeated for every API call definition.

4.4 API Access Methods

The following table gives an overview on the HTTP access methods supported by the API endpoints for the Push Account Entry Service.

Conditions in the following tables

Whether the support of a method is mandated for the ASPSP by this specification or whether is an optional feature for the ASPSP, is denoted in column "Condition". Please note that this condition is given relative to the parent node of the path, i.e. the condition e.g. on a method on /v1/subscriptions/{subscriptionId} applies only if the endpoint /v1/subscriptions is supported at all.

Please note that all methods called by an API Client, which are addressing dynamically created resources in this API, may only apply to resources, which have been created by the same API Client before.

Examples

Please note also, that the Description's column contains a reference to a section where the endpoint is described in more detail. These sections provide examples for all related access methods.

4.4.1 Subscription Endpoint

In the following, all access methods for subscribing to the Push Account Information Service are defined. The following potential instances of a push-accountinformation-subservice will be supported by this Framework:

- push-account-entries for subscribing to the Push Account Entry Service,
- push-account-statements for subscribing to the Push Account Statement Service,
- push-balances for subscribing to the Push Balance Information Service, and
- push-requests-to-pay for subscribing to the Push RTP Information Service.

| Endpoint | Method | Condition | Description |
|--|--------|-----------|---|
| subscriptions/{push-accountinformation-subservice} | POST | Mandatory | This command is activating a push account information sub-service on one or more dedicated accounts. Activation is achieved by establishing a subscription, to which the ASPSP will assign a subscriptionId. Within this subscription, the TPP can submit several subscription entries with several filtering and content criteria selected. The ASPSP will associate each of these subscription entries is with a subscriptionEntryId. This access method requires an SCA. Cp. Section 5.1 |
| subscriptions/{push-accountinformation-subservice}/{subscriptionId} | GET | Mandatory | Show information about the activated subscription and the related subscription entries, specifically delivering the entryId of every subscription entry. Cp. Section 5.2 |
| subscriptions/{push-accountinformation-subservice}/{subscriptionId}/status | GET | Mandatory | Show the status of a subscription. Cp. Section 5.3 |

| Endpoint | Method | Condition | Description |
|---|--------|---|---|
| subscriptions/{push-accountinformation-subservice}/{subscriptionId} | DELETE | Mandatory | De-activate the addressed subscription. This access method does not require SCA. Cp. Section 5.7 |
| subscriptions/{push-accountinformation-subservice}/{subscriptionId}/subscription-entries | POST | Mandatory | Add a subscription entry to an existing subscription. This access method will require an SCA. Section 5.4 |
| subscriptions/{push-accountinformation-subservice}/{subscriptionId}/subscription-entries/{subscriptionEntryId} | GET | Mandatory | Show information about the activated subscription entry See Section 5.5 |
| subscriptions/{push-accountinformation-subservice}/{subscriptionId}/subscription-entries/{subscriptionEntryId}/status | GET | Mandatory | Shows the status of a subscription entry. See Section 5.6 |
| subscriptions/{push-accountinformation-subservice}/{subscriptionId}/subscription-entries/{subscriptionEntryId} | DELETE | Mandatory | De-activates a dedicated subscription entry. This access method does not require SCA. See Section 5.8 |
| subscriptions/{push-accountinformation-subservice}/{subscriptionId}/authorisations | POST | Conditional | Starts an authorisation of the subscription through the PSU. The support of this access method is mandatory in case of the support of the Embedded or Decoupled SCA approach. Cp. [XS2A-IG] |
| subscriptions/{push-accountinformation-subservice}/{subscriptionId}/authorisations/{authorisationId} | PUT | Mandatory for Embedded SCA Approach, Conditional for other approaches | Update data on the authorisation resource if needed. It may authorise a subscription within the Embedded SCA Approach where needed. Independently from the SCA Approach it supports e.g. the selection of the authentication |



| Endpoint | Method | Condition | Description |
|---|--------|---|--|
| | | | method and a non-SCA PSU authentication. Cp. [XS2A-IG] |
| subscriptions/{push-accountinformation-subservice}/{subscriptionId}/authorisations/{authorisationId} | GET | Mandatory | Read the SCA status of the authorisation. Cp. [XS2A-IG] |
| subscriptions/{push-accountinformation-subservice}/{subscriptionId}/subscription-entries/{subscriptionEntryId}/authorisations | POST | Conditional | Starts an authorisation of adding the related subscription entry through the PSU. The support of this access method is mandatory in case of the support of the Embedded or Decoupled SCA approach. Cp. [XS2A-IG] |
| subscriptions/{push-accountinformation-subservice}/{subscriptionId}/subscription-entries/{subscriptionEntryId}/authorisations/{authorisationId} | PUT | Mandatory for Embedded SCA Approach, Conditional for other approaches | Update data on the authorisation resource if needed. It may authorise adding the related subscription entry within the Embedded SCA Approach where needed. Independently from the SCA Approach it supports e.g. the selection of the authentication method and a non-SCA PSU authentication. Cp. [XS2A-IG] |
| subscriptions/{push-accountinformation-subservice}/{subscriptionId}/subscription-entries/{subscriptionEntryId}/authorisations/{authorisationId} | GET | Mandatory | Read the SCA status of the authorisation. Cp. [XS2A-IG] |

4.4.2 Push Account Information Endpoint

| Endpoint | Method | Condition | Description |
|-----------------------------|--------|-----------|--|
| <apiClientPrimaryPushURI> | POST | Mandatory | <p>This command is pushing account information of a dedicated Push Account Information subservice to the addressed URI.</p> <p>This access method shall be supported by the API Client if a subscription of a related "Push Account Information subservice" has been initiated by the API Client in a previous call to the openFinance API of the ASPSP.</p> <p>See Section 6.2</p> |
| <apiClientSecondaryPushURI> | POST | Optional | <p>This command is pushing account information of a dedicated Push Account Information subservice to the addressed secondary URI if the endpoint under the primary URI is not reachable for the ASPSP.</p> <p>This access method shall be supported by the API Client if a subscription of a related "Push Account Information subservice" including a secondary PUSH URI has been initiated by the API Client in a previous call to the openFinance API of the ASPSP.</p> |



4.5 HTTP Response Codes

The HTTP response code by the ASPSP server is communicating the success or failure of a TPP request message. The 4XX HTTP response codes should only be given if the current request cannot be fulfilled, e.g. the syntax of the body content is not correct or it does not match the requirements of the addressed endpoint of the API. The permitted HTTP codes for the ASPSP are documented within [XS2A-IG].

This specification supports in addition the following HTTP response codes for the push account endpoint of the API Client Push Entry API, communicating the success or failure of an ASPSP request message:

| Status Code | Description |
|----------------------------|--|
| 200 OK | POST for pushing an account entry. |
| 400 Bad Request | Validation error occurred. This code will cover malformed syntax in request or incorrect data in payload. |
| 401 Unauthorized | The ASPSP is not correctly authorized to perform the request. Retry the request with correct authentication information. |
| 403 Forbidden | Returned if the resource that was referenced in the path exists but cannot be accessed by the ASPSP. This code should only be used for non-sensitive id references as it will reveal that the resource exists even though it cannot be accessed. |
| 404 Not found | Returned if the endpoint that was referenced in the path does not exist or cannot be referenced by the ASPSP. When in doubt if a specific id in the path is sensitive or not, use the HTTP response code 404 instead of the HTTP response code 403. |
| 405 Method Not Allowed | This code is only sent when the HTTP method (PUT, POST, DELETE, GET etc.) is not supported on a specific endpoint. |
| 408 Request Timeout | The server is still working correctly, but an individual request has timed out. |
| 415 Unsupported Media Type | The ASPSP has supplied a media type which the TPP does not support. |
| 500 Internal Server Error | Internal server error occurred. |
| 503 Service Unavailable | The TPP server is currently unavailable. Generally, this is a temporary state. |

4.6 SCA related Hyperlinks

As described in [XS2A-IG], hyperlinks are used in the interface for steering the communication process. Specifically, the process of strong customer authorisation (SCA) is strongly dependent on the ASPSP's implementation and therefore, any response from the ASPSP to a request from the TPP will include one or more SCA related links if the request creates a resource at the TPP that requires further authorisation. For this context, the following links are already defined in [XS2A-IG]:

| Link | Description |
|--|--|
| "scaRedirect" | In case of an SCA Redirect Approach, the ASPSP is transmitting the link to which to redirect the PSU browser. |
| "scaOAuth" | In case of an OAuth2 based Redirect Approach, the ASPSP is transmitting the link where the configuration of the OAuth2 Server is defined. The configuration follows the OAuth 2.0 Authorisation Server Metadata specification. |
| "confirmation" | Might be added by the ASPSP if either the "scaRedirect" or "scaOAuth" hyperlink is returned in the same response message. This hyperlink defines the URL to the resource which needs to be updated with <ul style="list-style-type: none"> • a confirmation code as retrieved after the plain redirect authentication process with the ASPSP authentication server or • an access token as retrieved by submitting an authorization code after the integrated OAuth based authentication process with the ASPSP authentication server. |
| "startAuthorisation" | In case, where an explicit start of the authorisation is needed, but no more data needs to be updated (no authentication method to be selected, no PSU identification nor PSU authentication data to be uploaded) |
| "startAuthorisation WithPsuIdentification" | The link to the authorisation end-point, where the authorisation sub-resource has to be generated while uploading the PSU identification data. |
| "startAuthorisation WithPsuAuthentication" | The link to the authorisation end-point, where the authorisation sub-resource has to be generated while uploading the PSU authentication data. |
| "startAuthorisation WithEncryptedPsuAuthentication" | The link to the authorisation end-point, where the authorisation sub-resource has to be generated while uploading the encrypted PSU authentication data. |

| Link | Description |
|---|--|
| "startAuthorisation WithAuthenticationMethodSelection" | The link to the authorisation end-point, where the authorisation sub-resource has to be generated while selecting the authentication method. This link is contained under exactly the same conditions as the data element "scaMethods" |
| "startAuthorisationWith TransactionAuthorisation" | The link to the authorisation end-point, where the authorisation sub-resource has to be generated while authorising the subscription e.g. by uploading an OTP received by SMS. |
| "scaStatus" | The link to retrieve the scaStatus of the corresponding authorisation sub-resource. This link is only contained if an authorisation sub-resource has been already created. |

4.7 Subscription and Subscription Entry Status

The subscription data model provides status information on subscription resource as well as on subscription entry level.

All status values besides "received", "partiallyAuthorised" and "validInChange" are final statuses.

Once the subscription as such has the status "valid", it will switch over to "validInChange" only during authorisation processes for new subscription entries. Invalidation of certain entries (either by expiration time, API Client or PSU) will have no effect on the subscription status.

4.8 Resource Availability

A valid subscription resource will be available as long as it is not invalidated either by expiration time, API Client or PSU. After the invalidation, the ASPSP might remove the resource data from the API after some time.

Valid subscription entry resources will be available as long as they are not invalidated either by expiration time, API Client or PSU or never have been fully authorised. After the invalidation, the ASPSP might remove the entry resource data from the API after some time, even if the related subscription is still valid.

4.9 Model for direct access for Corporates

This service is also relevant when the API Client is a direct corporate customer of the ASPSP and potentially gets Account Information directly pushed to the API Client's IT systems via this service. A potential impact is e.g. on using corporate signatures for proving SCA, performed by signature media issued by the ASPSP to the corporate customer. The related requirements will be defined in a more general definition yet and then also applied to this service in future.

5 Subscription for Account Information Service

NOTE: The Account Information Push Service is an extended service of the openFinance API Framework. This specification makes no assumption whether a contract may be needed for the ASPSP to offer this service to API Clients.

5.1 Initiate Subscription Request

The Initiate Subscription Request will be on the one hand uniform in the level of data provisioning, which is why this is specified in the following as "Generic Request". On the other hand, the structure of the selection and content criteria are quite different. So, some extensive examples are provided in the following sub sections for the different subservices.

5.1.1 Generic Request

Call

```
POST /subscriptions/{push-accountinformation-subservice}
```

Creates a corresponding subscription resource in the ASPSP server to start a Push Account Information Service on the addressed account to a push URI provided by the API Client.

NOTE: The subscription resource may contain several subscription entries. Every subscription entry where the related subscription entry (trigger) criteria are met will lead to the related push activity. If several subscription entries meet the (trigger) criteria following e.g. an account entry, **all** of the related push activities are performed even if this implies potentially a double processing.

Path Parameters

| Attribute | Type | Condition | Description |
|------------------------------------|--------|-----------|---|
| push-accountinformation-subservice | String | Mandatory | <p>The addressed subservice endpoint, e.g. for push-account-entries. The default list of sub services supported in this standard is:</p> <ul style="list-style-type: none"> • push-account-entries • push-account-statements • push-balances • push-requests-to-pay <p>The ASPSP will publish which of the subservices will be supported.</p> |

Query Parameters

No specific requirements

Request Header

| Attribute | Type | Condition | Description |
|------------------------------------|--------|-------------|---|
| X-Request-ID | UUID | Mandatory | Unique identification of the request. |
| Authorization | String | Conditional | Is contained only if OAuth2 has been used in a pre-step for onboarding the API Client |
| TPP-Notification-URI | String | Optional | <p>URI for the Endpoint of the TPP-API to which the status of the payment initiation should be sent.</p> <p>This header field may be ignored by the ASPSP, cp. also the extended service definition in [oFA-RSNS].</p> |
| TPP-Notification-Content-Preferred | String | Optional | <p>The string has the form</p> <p>status=X1, ..., Xn</p> <p>where Xi is one of the constants SCA, PROCESS, LAST and where constants are not repeated.</p> <p>The usage of the constants supports the following semantics:</p> <p>SCA: A notification on every change of the scaStatus attribute for all related authorisation processes is preferred by the API Client.</p> <p>PROCESS: A notification on all changes of subscriptionStatus attributes is preferred by the API Client.</p> <p>LAST: Only a notification on the last subscriptionStatus as available in the openFinance API is preferred by the API Client.</p> <p>This header field may be ignored if the ASPSP does not support resource notification services for the related API Client.</p> |
| TPP-Brand-Logging-Information | String | Optional | <p>This header might be used by the API Client to inform the ASPSP about the brand used by the API Client towards the PSU. This information is meant for logging entries to enhance communication between ASPSP and PSU or ASPSP and API Client.</p> <p>This header might be ignored by the ASPSP.</p> |

| Attribute | Type | Condition | Description |
|-------------|--------|-------------|--|
| Contract-ID | String | Conditional | ID of the underlying service contract between API Client and ASPSP, resulting from API Client onboarding, following [oFA-OR-ADM]. Only applies where a contract is mandated by the ASPSP. |

Request Body

| Attribute | Type | Condition | Description |
|-----------------------|-----------------------------|-----------|--|
| subscriptionEntries | Array of Subscription Entry | Mandatory | This is the non-empty array of subscription entries. Content of every entry is: <ul style="list-style-type: none"> account identification (e.g. IBAN) subscriptionEntryName corresponding entry parameters (depending on the service) Each subscriptionEntry will be stored in a sub-resource, which might be referenced later by the API client directly. Remark: If the balanceAmount ist provided with a currency that is not supported for this account, the ASPSP will reject the request. |
| encryptionSupported | Boolean | Optional | If the flag is set to false, no encryption is provided by the ASPSP. If the flag is set to true, the ASPSP can choose to support encryption. |
| encryptionCertificate | String | Optional | The certificate to be used for encryption by the ASPSP in base64 encoding. If not provided, no encryption will be provided. |

RULE: There can be multiple subscription entries for one account-id.

Response Code

The HTTP response code equals 201.

Response Header

| Attribute | Type | Condition | Description |
|-----------------|---------|-----------|--|
| ASPSP-Corporate | Boolean | Mandatory | This is a Boolean telling the API Client whether the addressed account is a corporate account (true) or not (false). |
| Location | String | Mandatory | Location of the created resource (if created) |
| X-Request-ID | UUID | Mandatory | ID of the request, unique to the call, as determined by the initiating party. |

Response Body

| Attribute | Type | Condition | Description |
|--------------------|---------------------|-----------|---|
| subscriptionId | String | Mandatory | Identification of the generated subscription. |
| subscriptionStatus | Subscription Status | Mandatory | This is the status of the subscription. |
| _links | Links | Mandatory | <p>A list of hyperlinks to be recognised by the API Client. The actual hyperlinks used in the response depend on the dynamical decisions of the ASPSP when processing the request.</p> <p>Remark: All links can be relative or full links, to be decided by the ASPSP.</p> <p>Type of links admitted in this response, (further links might be added for ASPSP defined extensions):</p> <p>"self": The link to the subscription resource created by this request. This link can be used to retrieve the resource data.</p> <p>"status": The link to retrieve the subscription status of the subscription.</p> <p>Also, any of the SCA related hyperlinks (cp. 4.6) may occur.</p> |

5.1.2 Example Push Account Entry Service

Example

With the following request, the TPP submits a subscription for the Push Account Entry Service. The subscription contains one subscription entry: With this entry, the TPP asks to be informed via a callback each time a card transaction with amount 100 € or higher appears on the account (with IBAN DE40100100103307118608). The push notification shall contain the text "debit alarm" and should contain the data elements "transactionAmount" and "creditorName" from the respective card transaction.

Request

```
POST https://api.testbank.com/v1/subscriptions/push-account-entries
X-Request-ID:          99391c7e-ad88-49ec-a2ad-99ddcb1f7719
Date:                  Sun, 06 Aug 2017 15:03:46 GMT
{
  "subscriptionEntries":
  [
    {"accountId": {"iban": "DE40100100103307118608"},
     "subscriptionEntryName": "Card Debit-Alarm",
     "apiClientPrimaryPushURI": "www.example-TPP.com/openFinance-client/v1/ASPSPid/psu-account-id/entries",
     "responseWithLinkPreferred": false,
     "responseWithStaticTextPreferred": true,
     "staticCallbackText": "debit-alarm", /* in case of high value debit
     "pushAccountEntryParameters":
     {
       "accountEntryCriteria": {
         "bankTransactionCodePatterns": ["PMNT-CCRD-????"], /* all card
transactions
         "minimumAmount": {"currency": "EUR", "amount": "100"} /*would
only forward information about entries starting from 100 Euro
       },
       "acceptedFormat": "application/json",
       "preferredAttributes": ["transactionAmount", "creditorName"],
       "documentsPreferred": true /* forwards also e.g. e-receipts related
to the card transaction if supported by the ASPSP
     }
   }
  ],
  "encryptionSupported": false
}
```

Response

```
HTTP/1.x 201 Ok
ASPSP-Corporate:      false
```



X-Request-ID: 99391c7e-ad88-49ec-a2ad-99ddcb1f7719
Date: Sun, 06 Aug 2017 15:03:47 GMT
Content-Type: application/json

```
{
  "subscriptionId": "1234-wertiq-983",
  "subscriptionStatus": "received",
  "_links":
  {
    "scaRedirect": {"href": "https://www.testbank.com/asdfasdfasdf"},
    "self": {"href": "/v2/subscriptions/push-account-entries/1234-wertiq-983"},
    "status": {"href": "/v2/subscriptions/push-account-entries/1234-wertiq-983/status"},
    "scaStatus": {"href": "/ v2/subscriptions/push-account-entries/1234-wertiq-983/authorisations/123auth456"}
  }
}
```

5.1.3 Example Push Account Statement Subservice

For this subservice, only the subscription entry is provided as example as part of the request body:

With this entry, the TPP asks to be provided with each account statement of "camt.053" format for the account with IBAN DE40100100103307118608 as soon as it is created within the ASPSP's system. The callback shall contain the data directly (not with a download link). A specific text for the callback is not defined.

```
"subscriptionEntries":
[
  {
    "accountId": {"iban": "DE40100100103307118608"},
    "subscriptionEntryName": "Daily Statement Delivery",
    "apiClientPrimaryPushURI": "www.example-TPP.com/xs2a-client/v1/ASPSPid/psu-account-id/account-statements",
    "responseWithLinkPreferred": false,
    "responseWithStaticTextPreferred": false,
    "pushAccountStatementParameters":
    {
      "accountStatementCriteria": {
        "statements": "camt.053",
        "event": "afterGeneration"
      }
    }
  }
]
```



5.1.4 Example Push Balance Information Subservice

For this subservice, only the subscription entry is provided as example as part of the request body:

With this entry, the TPP asks to be informed via a callback, whenever the balance of type "interimAvailable" for the account with IBAN DE40100100103307118608 changes from being 0 € or more to being less than 0 €. The callback shall contain the data directly (not with a download link). A specific text for the callback is not defined.

```
"subscriptionEntries":
  [
    {
      "accountId": {"iban": "DE40100100103307118608"},
      "subscriptionEntryName": "balance alarm",
      "apiClientPrimaryPushURI": "www.example-TPP.com/xs2a-client/v1/ASPSpid/psu-account-id/entries",
      "responseWithLinkPreferred": false,
      "responseWithStaticTextPreferred": false,
      "pushBalanceParameters":
        {
          "balanceCriteria": {
            "balanceAmount": {"currency": "EUR", "amount": "0.0"},
            "balanceOperator": "less",
            "balanceType": "interimAvailable"}
          }
        }
    ]
  ]
```

5.1.5 Example Push RTP Information Subservice

For this subservice, only the subscription entry is provided as example as part of the request body:

With this entry, the TPP asks to be informed via a callback, whenever specific Requests for Payment are received for the account with IBAN DE40100100103307118608. Not every Request for Payment shall trigger a callback, only those that have an expiration time of 30 minutes or less. The callback shall be sent directly after the receipt of the corresponding Request to Pay. The callback shall contain the data directly (not with a download link). A specific text for the callback is not defined.

```
"subscriptionEntries":
  [
    {
      "accountId": {"iban": "DE40100100103307118608"},
      "subscriptionEntryName": "Forward urgent RTPs",
      "apiClientPrimaryPushURI": "www.example-TPP.com/xs2a-client/v1/ASPSpid/psu-account-id/rtps",
      "responseWithLinkPreferred": true,
    ]
  ]
```

```

    "responseWithStaticTextPreferred": false,
    "pushRtpParameters":
    {
      "rtpCriteria": {
        "event": "afterReception",
        "timeToExpire": 30 /* only forward incoming rtp with an expiry
timestamp in a period of 30 minutes
      }
      "acceptedFormat": "application/JSON",
      "documentsPreferred": true
    }
  ]

```

5.2 Read Subscription Details

Call

GET /v1/subscriptions/{push-accountinformation-subservice}/{subscriptionId}

reads the details (including subscriptionEntryIds and status) of the subscription resource.

Path Parameters

| Attribute | Type | | Description |
|------------------------------------|--------|-----------|--|
| push-accountinformation-subservice | String | Mandatory | <p>The addressed subservice endpoint, e.g. for push-account-entries. The default list of sub services supported in this standard is:</p> <ul style="list-style-type: none"> • push-account-entries • push-account-statements • push-balances • push-requests-to-pay, <p>The ASPSP will publish which of the subservices will be supported.</p> |
| subscriptionId | String | Mandatory | The ID of the subscription object to be retrieved |

Query Parameters

No specific query parameter.

Request Headers

| Attribute | Type | Condition | Description |
|--------------|------|-----------|---|
| X-Request-ID | UUID | Mandatory | ID of the request, unique to the call, as determined by the initiating party. |

Request Body

No request body.

Response Code

The HTTP response code equals 200.

Response Header

| Attribute | Type | Condition | Description |
|--------------|------|-----------|---|
| X-Request-ID | UUID | Mandatory | ID of the request, unique to the call, as determined by the initiating party. |

Response Body

| Attribute | Type | Condition | Description |
|-----------------------|-----------------------------|-----------|---|
| subscriptionStatus | Subscription Status | Mandatory | This is the status of the subscription. |
| subscriptionEntries | Array of Subscription Entry | Mandatory | This is the collection of subscription entries. Content: <ul style="list-style-type: none"> • accountId • subscriptionEntryId • subscriptionEntryName • _link (sub-resource) |
| encryptionSupported | Boolean | Optional | If the flag is set to false, no encryption is provided by the ASPSP. If the flag is set to true, the ASPSP can choose to support encryption. |
| encryptionCertificate | String | Optional | The certificate to be used for encryption by the ASPSP in base64 encoding. If not provided, no encryption will be provided. |
| subscriptionStatus | Subscription Status | Mandatory | The status of the subscription resource. |

Example

Request

```
GET https://api.testbank.com/v1/subscriptions/push-account-
entries/qwer3456tzui7890
X-Request-ID:          99391c7e-ad88-49ec-a2ad-99ddcb1f7721
Date:                  Sun, 06 Aug 2017 15:05:46 GMT
```

Response

```
HTTP/1.x 200 Ok
X-Request-ID:          99391c7e-ad88-49ec-a2ad-99ddcb1f7721
Date:                  Sun, 06 Aug 2017 15:05:47 GMT
Content-Type:          application/json
```

```
{
  "subscriptionEntries": [
    {
      "accountId": {"iban": "DE40100100103307118608"},
      "subscriptionEntryName": "description 1",
      "subscriptionEntryId": "ID11111111",
      "_links":
        {
          "entry": {"href": " /v2/subscriptions/push-account-entries/1234-
                    wertiq-983/entries/ID11111111"}
        }
    },
    {
      "accountId": {"iban": "DE40345100103307118789"},
      "subscriptionEntryName": "description 2",
      "subscriptionEntryId": "ID22222222",
      "_links":
        {
          "entry": {"href": "/v2/subscriptions/push-account-entries/1234-
                    wertq-983/entries/ID22222222"}
        }
    },
  ],
  "encryptionSupported": false,
  "subscriptionStatus": "received"
}
```



5.3 Read Subscription Status

Call

GET /v1/[subscriptions/{push-accountinformation-subservice}/{subscriptionId}/status](#)

Reads the status of the subscription resource.

Path Parameters

| Attribute | Type | | Description |
|------------------------------------|--------|-----------|--|
| push-accountinformation-subservice | String | Mandatory | <p>The addressed sub service endpoint, e.g. for push-account-entries. The default list of sub services supported in this standard is:</p> <ul style="list-style-type: none"> • push-account-entries • push-account-statements • push-balances • push-requests-to-pay <p>The ASPSP will publish which of the subservices will be supported.</p> |
| subscriptionId | String | Mandatory | The ID of the subscription object to be retrieved |

Query Parameters

No specific query parameters defined.

Request Header

| Attribute | Type | Condition | Description |
|--------------|------|-----------|---|
| X-Request-ID | UUID | Mandatory | ID of the request, unique to the call, as determined by the initiating party. |

Request Body

No request body.

Response Code

HTTP Response Code equals 200.

Response Header

| Attribute | Type | Condition | Description |
|--------------|------|-----------|---|
| X-Request-ID | UUID | Mandatory | ID of the request, unique to the call, as determined by the initiating party. |

Response Body

| Attribute | Type | Condition | Description |
|--------------------|---------------------|-----------|--|
| subscriptionStatus | Subscription Status | Mandatory | This is the status of the subscription. |
| _links | Links | Optional | This a list of hyperlinks of type "entryRevokedStatus" to the status endpoints of entries where the subscriptionEntryStatus equals revokedByPsu. |

Example

Request

GET <https://api.testbank.com/v1/subscriptions/push-account-entries/qwer3456tzui7890/status>

X-Request-ID: 99391c7e-ad88-49ec-a2ad-99ddcb1f7721
Date: Sun, 06 Aug 2017 15:05:46 GMT

Response

HTTP/1.x 200 Ok
X-Request-ID: 99391c7e-ad88-49ec-a2ad-99ddcb1f7721
Date: Sun, 06 Aug 2017 15:05:47 GMT
Content-Type: application/json

```
{
  "subscriptionStatus": "received",
  "_links":
    {"entryStatusRevoked":
      [{"href": ".../status"}]}
}
```

5.4 Add a Subscription Entry

Call

POST /subscriptions/{push-accountinformation-subservice}/{subscriptionId}/subscription-entries

Creates and adds subscription entry sub-resource to an existing subscription.

Path Parameters

| Attribute | Type | Condition | Description |
|------------------------------------|--------|-----------|---|
| push-accountinformation-subservice | String | Mandatory | <p>The addressed sub service endpoint, e.g. for push-account-entries. The default list of sub services supported in this standard is:</p> <ul style="list-style-type: none"> • push-account-entries • push-account-statements • push-balances • push-requests-to-pay, <p>The ASPSP will publish which of the subservices will be supported.</p> <p>Note: For this version, this specification only supports the service referred to by "push-account-entries".</p> |
| subscriptionId | String | Mandatory | The subscription object to be retrieved |

Query Parameters

No specific requirements

Request Header

| Attribute | Type | Condition | Description |
|--------------|------|-----------|---------------------------------------|
| X-Request-ID | UUID | Mandatory | Unique identification of the request. |

Request Body

| Attribute | Type | Condition | Description |
|-------------------|--------------------|-----------|--|
| subscriptionEntry | Subscription Entry | Mandatory | <p>This is a subscription entry. Content:</p> <ul style="list-style-type: none"> • accountId • subscriptionEntryName |

| Attribute | Type | Condition | Description |
|-----------|------|-----------|---|
| | | | <ul style="list-style-type: none"> corresponding entry parameters (depending on the service) |

Response Code

The HTTP response code equals 201.

Response Header

| Attribute | Type | Condition | Description |
|--------------|--------|-----------|---|
| Location | String | Mandatory | Location of the created resource (if created) |
| X-Request-ID | UUID | Mandatory | ID of the request, unique to the call, as determined by the initiating party. |

Response Body

| Attribute | Type | Condition | Description |
|-------------------------|---------------------------|-----------|---|
| subscriptionEntryId | String | Mandatory | Identification of the created subscription entry within the related subscription. |
| subscriptionEntryStatus | Subscription Entry Status | Mandatory | This is the status of the subscription entry. |
| _links | Links | Mandatory | <p>A list of hyperlinks to be recognised by the TPP. The actual hyperlinks used in the response depend on the dynamical decisions of the ASPSP when processing the request.</p> <p>Remark: All links can be relative or full links, to be decided by the ASPSP.</p> <p>Type of links admitted in this response, (further links might be added for ASPSP defined extensions):</p> <p>"self": The link to the subscription entry resource created by this request. This link can be used to retrieve the resource data.</p> <p>"status": The link to retrieve the subscription entry status.</p> |

| Attribute | Type | Condition | Description |
|-----------|------|-----------|---|
| | | | Also, any of the SCA related hyperlinks (cp. 4.6) may occur. |

Example

Request

POST https://api.testbank.com/v1/subscriptions/push-account-entries/1234-wertiq-983/subscription-entries

X-Request-ID: 99391c7e-ad88-49ec-a2ad-99ddcb1f7719

Date: Sun, 06 Aug 2017 15:03:46 GMT

```
{
  "subscriptionEntry":
  {
    "accountId": {"iban": "DE40100100103307118608"},
    "subscriptionEntryName": "description 1",
    "apiClientPrimaryPushURI": "www.example-TPP.com/openFinance-client/v1/ASPSPid/psu-account-id/entries",
    "responseWithLinkPreferred": false,
    "responseWithStaticTextPreferred": true,
    "staticCallbackText": "high value alarm", /* in case of high value transactions (debit and credit)
    "pushAccountEntryParameters":
    {
      "accountEntryCriteria": {
        "minimumAmount": {"currency": "EUR", "amount": "300"} /would only forward information about entries starting with 300 Euro
      },
      "acceptedFormat": "application/json",
      "preferredAttributes": ["transactionAmount", "creditorName"],
      "documentsPreferred": true /* forwards also e.g. e-receipts related to the card transaction if supported by the ASPSP
    }
  }
}
```

Response

HTTP/1.x 201 Ok

X-Request-ID: 99391c7e-ad88-49ec-a2ad-99ddcb1f7719

Date: Sun, 06 Aug 2017 15:03:47 GMT

Content-Type: application/json

```
{
```



```

"subscriptionId": "1234-wertiq-983",
"subscriptionEntryId": "ID22222222",
"subscriptionEntryStatus": "received",
"_links":
{
  "scaRedirect": {"href": "https://www.testbank.com/asdfasdfasdf"},
  "self": {"href": "/v2/subscriptions/push-account-entries/
1234-wertiq-983/subscription-entries/ID22222222"},
  "status": {"href": "/v2/subscriptions/push-account-entries/
1234-wertiq-983/subscription-entries/ID22222222/status"},
  "scaStatus": {"href": "/v2/subscriptions/push-account-entries/
1234-wertiq-983/subscription-entries/ID22222222/authorisations/123auth456"}
}
}

```

5.5 Read Subscription Entry Details

Call

GET /v1/ subscriptions/{push-accountinformation-subservice}/{subscriptionId}/subscription-entries/{subscriptionEntryId}

Path Parameters

| Attribute | Type | Condition | Description |
|------------------------------------|--------|-----------|---|
| push-accountinformation-subservice | String | Mandatory | <p>The addressed sub service endpoint, e.g. for push-account-entries. The default list of sub services supported in this standard is:</p> <ul style="list-style-type: none"> • push-account-entries • push-account-statements • push-balances • push-requests-to-pay, <p>The ASPSP will publish which of the subservices will be supported.</p> <p>Note: For this version, this specification only supports the service referred to by push-account-entries.</p> |
| subscriptionId | String | Mandatory | Identification of the addressed subscription. |
| subscriptionEntryId | String | Mandatory | Identification of the created subscription entry itself. |

Query Parameters

No specific query parameter.

Request Headers

| Attribute | Type | Condition | Description |
|--------------|------|-----------|---|
| X-Request-ID | UUID | Mandatory | ID of the request, unique to the call, as determined by the initiating party. |

Request Body

No request body.

Response Code

The HTTP response code equals 200.

Response Header

| Attribute | Type | Condition | Description |
|--------------|------|-----------|---|
| X-Request-ID | UUID | Mandatory | ID of the request, unique to the call, as determined by the initiating party. |

Response Body

| Attribute | Type | Condition | Description |
|-------------------------|---------------------|-----------|--|
| subscriptionEntryStatus | Subscription Status | Mandatory | The status of the subscription entry resource itself. |
| subscriptionEntry | Subscription Entry | Mandatory | Content of the addressed subscription entry: <ul style="list-style-type: none"> • accountId • subscriptionEntryId • subscriptionEntryName • _link (sub-resource) |

Example

Request

```
GET https://api.testbank.com/v1/subscriptions/push-account-entries/qwer3456tzui7890/entries/ID11111111
```

```
X-Request-ID: 99391c7e-ad88-49ec-a2ad-99ddcb1f7721
```

```
Date: Sun, 06 Aug 2017 15:05:46 GMT
```

Response

HTTP/1.x 200 Ok

X-Request-ID: 99391c7e-ad88-49ec-a2ad-99ddcb1f7721

Date: Sun, 06 Aug 2017 15:05:47 GMT

Content-Type: application/json

```
{
  "subscriptionEntryStatus": "received",
  "subscriptionEntry":
    {
      {
        "accountId": {"iban": "DE40100100103307118608"},
        "subscriptionEntryId": "ID111111111",
        "subscriptionEntryName": "Card Debit-Alarm",
        "apiClientPrimaryPushURI": "www.example-TPP.com/openFinance-client/v1/ASPSpid/psu-account-id/entries",
        "responseWithLinkPreferred": false,
        "responseWithStaticTextPreferred": true,
        "staticCallbackText": "debit-alarm",
        "pushAccountEntryParameters":
          {
            "accountEntryCriteria": {
              "bankTransactionCodePatterns": ["PMNT-CCRD-*"],
              "minimumAmount": {"currency": "EUR", "amount": "100"}
            },
            "acceptedFormat": "application/json",
            "preferredAttributes": ["transactionAmount", "creditorName"],
            "documentsPreferred": true
          }
      }
    }
}
```

5.6 Read Subscription Entry Status

Call

```
GET /v1/subscriptions/{push-accountinformation-
subservice}/{subscriptionId}/subscription-
entries/{subscriptionEntryId}/status
```

Path Parameters

| Attribute | Type | Condition | Description |
|------------------------------------|--------|-----------|--|
| push-accountinformation-subservice | String | Mandatory | The addressed sub service endpoint, e.g. for push-account-entries. The default list of sub services supported in this standard is: <ul style="list-style-type: none"> • push-account-entries • push-account-statements • push-balances • push-requests-to-pay The ASPSP will publish which of the subservices will be supported. |
| subscriptionId | String | Mandatory | Identification of the addressed subscription. |
| subscriptionEntryId | String | Mandatory | Identification of the subscription entry itself. |

Query Parameters

No specific query parameter.

Request Headers

| Attribute | Type | Condition | Description |
|--------------|------|-----------|---|
| X-Request-ID | UUID | Mandatory | ID of the request, unique to the call, as determined by the initiating party. |

Request Body

No request body.

Response Code

The HTTP response code equals 200.

Response Header

| Attribute | Type | Condition | Description |
|--------------|------|-----------|---|
| X-Request-ID | UUID | Mandatory | ID of the request, unique to the call, as determined by the initiating party. |

Response Body

| Attribute | Type | Condition | Description |
|-------------------------|---------------------|-----------|---|
| subscriptionEntryStatus | Subscription Status | Mandatory | The status of the subscription entry resource itself. |

Example**Request**

```
GET https://api.testbank.com/v1/subscriptions/push-account-
entries/qwer3456tzui7890/entries/ID11111111
X-Request-ID:          99391c7e-ad88-49ec-a2ad-99ddcb1f7721
Date:                  Sun, 06 Aug 2017 15:05:46 GMT
```

Response

```
HTTP/1.x 200 Ok
X-Request-ID:          99391c7e-ad88-49ec-a2ad-99ddcb1f7721
Date:                  Sun, 06 Aug 2017 15:05:47 GMT
Content-Type:          application/json
```

```
{
  "subscriptionEntryStatus": "received"
}
```

5.7 Cancel Subscription Request

The TPP can cancel a push account information subscription if needed with the following call:

Call

```
DELETE /v1/subscriptions/{push-accountinformation-
subservice}/{subscriptionId}
```

Deletes a given subscription resource.

Path Parameters

| Attribute | Type | Condition | Description |
|------------------------------------|--------|-----------|---|
| push-accountinformation-subservice | String | Mandatory | <p>The addressed sub service endpoint, e.g. for push-account-entries. The default list of sub services supported in this standard is:</p> <ul style="list-style-type: none"> • push-account-entries • push-account-statements • push-balances • push-requests-to-pay, <p>The ASPSP will publish which of the subservices will be supported.</p> |
| subscriptionId | String | Mandatory | The ID of the subscription to be cancelled. |

Query Parameters

No specific query parameters.

Request Header

| Attribute | Type | Condition | Description |
|--------------|------|-----------|---|
| X-Request-ID | UUID | Mandatory | ID of the request, unique to the call, as determined by the initiating party. |

Request Body

No Request Body.

Response Code

The HTTP response code 204 is used if a subscription was deleted successfully.

Response Header

| Attribute | Type | Condition | Description |
|--------------|------|-----------|---|
| X-Request-ID | UUID | Mandatory | ID of the request, unique to the call, as determined by the initiating party. |

Response Body

No Response Body

Example

Request

DELETE <https://api.testbank.com/v1/subscriptions/push-account-entries/qwer3456tzui7890>

X-Request-ID 99391c7e-ad88-49ec-a2ad-99ddcb1f7757
Date Sun, 13 Aug 2017 17:05:37 GMT

Response

HTTP/1.x 204 No Content

X-Request-ID: 99391c7e-ad88-49ec-a2ad-99ddcb1f7757
Date: Sun, 13 Aug 2017 17:05:47 GMT

5.8 De-activate Subscription Entry Request

The TPP can delete a push account information entry subscription if needed with the following call:

Call

DELETE /v1/subscriptions/push-account-entries/{subscriptionId}/subscription-entries/{subscriptionEntryId}

Deactivates a given subscription entry resource.

Path Parameters

| Attribute | Type | Condition | Description |
|------------------------------------|--------|-----------|--|
| push-accountinformation-subservice | String | Mandatory | The addressed sub service endpoint, e.g. for push-account-entries. The default list of sub services supported in this standard is: <ul style="list-style-type: none"> • push-account-entries • push-account-statements • push-balances • push-requests-to-pay The ASPSP will publish which of the subservices will be supported. |
| subscriptionId | String | Mandatory | Identification of the addressed subscription. |
| subscriptionEntryId | String | Mandatory | Identification of the created subscription entry itself. |

Query Parameters

No specific query parameters.

Request Header

| Attribute | Type | Condition | Description |
|--------------|------|-----------|---|
| X-Request-ID | UUID | Mandatory | ID of the request, unique to the call, as determined by the initiating party. |

Request Body

No Request Body.

Response Code

The HTTP response code 204 is used if a subscription was deleted successfully.

Response Header

| Attribute | Type | Condition | Description |
|--------------|------|-----------|---|
| X-Request-ID | UUID | Mandatory | ID of the request, unique to the call, as determined by the initiating party. |

Response Body

No Response Body

Example

Request

DELETE <https://api.testbank.com/v1/subscriptions/push-account-entries/qwer3456tzui7890>

X-Request-ID 99391c7e-ad88-49ec-a2ad-99ddcb1f7757
Date Sun, 13 Aug 2017 17:05:37 GMT

Response

HTTP/1.x 204 No Content

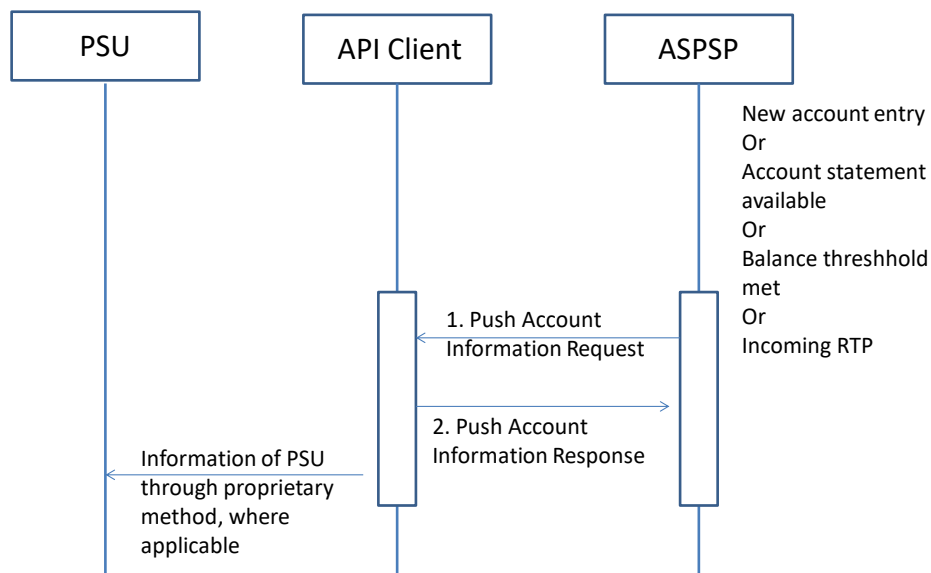
X-Request-ID: 99391c7e-ad88-49ec-a2ad-99ddcb1f7757
Date: Sun, 13 Aug 2017 17:05:47 GMT



6 Push Account Information

6.1 Push Account Information Message Flows

The following flow shows the simple request and response flow for an account information push service:



6.2 Push Account Information Messages

Call

POST <apiClientPrimaryPushURI>

Posts account information in JSON encoding to the primary URI of the API Client.

Path Parameters

No Path Parameter

Query Parameters

No Query Parameter

Request Header

| Attribute | Type | Condition | Description |
|--------------|------|-----------|---|
| X-Request-ID | UUID | Mandatory | ID of the request, unique to the call, as determined by the initiating party. |

Request Body for Push Account Entries (JSON)

| Attribute | Type | Condition | Description |
|--------------------|---------------------|-----------|--|
| account | Account Reference | Mandatory | |
| debitAccounting | Boolean | Optional | If true, the amounts of debits on the reports are quoted positive with the related consequence for balances. If false, the amount of debits on the reports are quoted negative. |
| dateTimeLastPush | ISODateTime | Optional | |
| staticCallbackText | Max140 | Optional | |
| _links | Links | Optional | |
| transactions | Lean Account Report | Optional | |

Request Body for Push Account Entries (XML)

This is transported via camt.05x messages, as defined by the ASPSP.

Request Body for Push Balance Information

| Attribute | Type | Condition | Description |
|--------------------|-------------------|-----------|-------------|
| account | Account Reference | Mandatory | |
| balance | Balance Type | Optional | |
| staticCallbackText | Max140 | Optional | |
| _links | Links | Optional | |
| dateTimeLastPush | ISODateTime | Optional | |

Request Body for Account Statements (JSON)

This is not defined yet.

RFU: A format of a JSON based account statement might be defined in future.

Request Body for Account Statements (XML)

This is transported via camt.05x messages, as defined by the ASPSP.

Request Body for Account Statements (MT version)

This is transported via MT94x messages, as defined by the ASPSP.

RFU: A JSON based statement format will follow in near future.

Request Body for RTP Information (JSON)

| Attribute | Type | Condition | Description |
|--------------------|---------------------|-----------|--|
| dateTimeLastPush | ISODatetime | Optional | |
| account | Account Reference | Mandatory | |
| staticCallbackText | Max140 | Optional | |
| _links | Links | Optional | |
| transactions | Lean Account Report | Optional | Incoming RTPs are reported as transactions of type "information" and with a mandatory subfield "additionalInformationStructured" as well as either a related Bank Transaction Code or proprietary Bank Transaction Code. |

Request Body for RTP-information (XML)

in pain.013 formats.

HTTP Response Code

204

Note: If the response code does not equal 204, then the ASPSP will push the related information to the secondary URI if registered during subscription. If a secondary URI has not been registered by the API Client, then the notification will not be repeated. The ASPSP may repeat each of these notifications.

Response Header

| Attribute | Type | Condition | Description |
|--------------|------|-----------|---|
| X-Request-ID | UUID | Mandatory | ID of the corresponding request, unique to the call, as determined by the initiating party. |

Response Body

No Response Body

Example for a Push Account Entries Request (JSON)

Request

POST www.example-TPP.com/openFinance-client/v1/ASPSPid/psu-account-id/entries

Content-Type: application/json
X-Request-ID: 99391c7e-ad88-49ec-a2ad-99ddcb1f7721
Date: Sun, 29 Oct 2017 15:02:37 GMT

```
{
  "account": {"iban": "DE40100100103307118608" },
  "dateTimeLastPush": "2017-10-01T00:00:00Z",
  "staticCallbackText": "high value alarm",
  "transactions":
    [{
      "transactionId": "1234567",
      "creditorName": "John Miles",
      "creditorAccount": {"iban": "DE67100100101306118605"},
      "transactionAmount": {"currency": "EUR", "amount": "356.67"},
      "bookingDate": "2017-10-25",
      "valueDate": "2017-10-26",
      "remittanceInformationUnstructured": "Example 1"
    }, {
      "transactionId": "1234568",
      "debtorName": "Paul Simpson",
      "debtorAccount": {"iban": "NL76RABO0359400371"},
      "transactionAmount": {"currency": "EUR", "amount": "343.01"},
      "bookingDate": "2017-10-25",
      "valueDate": "2017-10-26",
      "remittanceInformationUnstructured": "Example 2"
    }
  ]
}
```

Response

HTTP/1.x 204
Content-Type: application/json
X-Request-ID: 99391c7e-ad88-49ec-a2ad-99ddcb1f7721
Date: Sun, 29 Oct 2017 15:04:08 GMT



7 Complex Data Types

7.1 Subscription Entry

| Attribute | Type | Condition | Description |
|---------------------------------|-------------------|-------------------------|--|
| accountId | Account Reference | Mandatory | This is the account from which related entries shall be pushed. |
| subscriptionEntryName | Max35Text | Optional | Name of the subscription entry |
| subscriptionEntryId | String | Conditional | Forbidden in an <i>Initiate Subscription Request</i> (cp. 5.1) and in an <i>Add a Subscription Entry Request</i> (cp. 5.4) by the TPP (as this is assigned by the ASPSP). Mandatory in each entry of a response from an ASPSP. |
| apiClientPrimaryPush URI | Max256Text | Mandatory | The URI where related account information shall be pushed to. |
| apiClientSecondaryPush URI | Max256Text | [Optional if supported] | The URI where related account information shall be pushed to if the primary push URI is not reachable. If this attribute is used by the API Client and the ASPSP is not supporting this feature, then the request will be rejected with a dedicated additional error information. |
| callbackWithLinkPreferred | Boolean | Optional | API Client prefers to receive hyperlinks pointing to the related account information element if the related subservice criteria are met. |
| callbackWithStaticTextPreferred | Boolean | Optional | API Client prefers to get informed by static text if the related subservice criteria are met. |
| staticCallbackText | Max140Text | Optional | The text to be provided by the ASPSP in case static text is |



| Attribute | Type | Condition | Description |
|--------------------------------|-----------------------------------|-----------|---|
| | | | sent if the related subservice criteria are met. |
| pushAccountEntryParameters | Push Account Entry Parameters | {Or | Parameters for a subscription entry for the Push Account Entry Service. |
| pushAccountStatementParameters | Push Account Statement Parameters | Or | Parameters for a subscription entry for the Push Account Statement Service. |
| pushBalanceParameters | Push Balance Parameters | Or | Parameters for a subscription entry for the Push Balance Information Service. |
| pushRtpParameters | Push RTP Parameters | Or} | Parameters for a subscription entry for the Push RTP Information Service. |

7.2 Push Account Entry Parameters

| Attribute | Type | Condition | Description |
|----------------------|--------------------------------|-----------|--|
| accountEntryCriteria | Account Entry Trigger Criteria | Optional | This attribute is defining the account entries to be pushed to the API Client push URI: All entries which are fulfilling all the criteria listed in this attribute will be pushed. If the attribute is not provided, all account entries will be pushed. |
| acceptedFormat | Mime Type Code | Mandatory | This attribute describes the mime type which is supported for pushing the account entries by the API Client. If there is no match with the mime types offered by the ASPSP, the subscription is rejected with a dedicated error code. |
| preferredAttributes | Array of Max35Text | Optional | These attributes are the preferred ones for every account entry to be pushed. The ASPSP might ignore this preference. Only attributes of |



| Attribute | Type | Condition | Description |
|--------------------|---------|-----------|--|
| | | | the first level of Type Transactions as defined in [XS2A-IG] might be used. |
| documentsPreferred | Boolean | Optional | RFU: This data element indicates that the API Client prefers to also receive documents attached to an account entry. This data attribute might be ignored by the ASPSP. |

7.3 Account Entry Trigger Criteria

| Attribute | Type | Condition | Description |
|-----------------------------|--|-----------|--|
| bankTransactionCodePatterns | Array of Bank Transaction Code Pattern | optional | <p>The criterion is fulfilled if the bankTransactionCode of the related account entry matches one of the bank transaction codes or code patterns (see the following paragraph) defined by this list.</p> <p>Any particle of the Bank Transaction Code triple might be replaced by the "?????" character, indicating that all sub family codes apply. However, at least one particle of the triple must be stated explicitly (e.g. "?????-CCRD-?????").</p> |
| proprietaryBankCodes | Array of Max35Text | Optional | The criterion is fulfilled if the proprietaryBankTransactionCode of the related account entry equals one of the proprietary bank transaction codes defined by this list. |
| accountEntryStatus | Account Entry Status | Optional | <p>The criterion is fulfilled if the account entry has the related status booked or pending respectively.</p> <p>Note: Entries might be pushed twice in case where this criterion is not provided if the transactionStatus is changed from</p> |

| Attribute | Type | Condition | Description |
|------------------------------------|-------------------|-----------|--|
| | | | pending to booked in the account system. |
| maximumAmount | Amount | Optional | The criterion is fulfilled if the (absolute value of the) transactionAmount of the related account entry is provided in the same currency and if the transactionAmount is less or equal to the amount provided in this attribute. |
| minimumAmount | Amount | Optional | The criterion is fulfilled if the (absolute value of the) transactionAmount of the related account entry is provided in the same currency and if the transactionAmount is greater or equal to the amount provided in this attribute. |
| debtorAccounts | Account Reference | Optional | The criterion is fulfilled if the counterparty account of the related account entry is a debtor account and equals the account defined in this attribute. |
| creditorAccounts | Account Reference | Optional | The criterion is fulfilled if the counterparty account of the related account entry is a creditor account and equals the account defined in this attribute. |
| creditDebitIndicator | Credit Debit Code | Optional | The criterion is fulfilled if the related account entry is a credit as defined in this attribute, or a debit respectively. |
| Purpose | Purpose Code | Optional | The criterion is fulfilled if the related account entry has a purpose code equal to the code provided in this attribute. |
| remittanceInformation Unstructured | Max140Text | Optional | The criterion is fulfilled if the related account entry has an unstructured remittance information where the |



| Attribute | Type | Condition | Description |
|-----------|------|-----------|--|
| | | | string provided in this attribute is contained as a substring. |

7.4 Push Account Statements Parameters

| Attribute | Type | Condition | Description |
|--------------------------|------------------------------------|-----------|---|
| accountStatementCriteria | Account Statement Trigger Criteria | Mandatory | This attribute is defining the account statements to be pushed to the API Client push URI: Every time, the criteria listed in this attribute are all fulfilled, the current account statement of the related account is pushed. |

7.5 Account Statement Trigger Criteria

| Attribute | Type | Condition | Description |
|------------|-----------|-----------|---|
| reports | Max35Text | {OR | One of the values ""MT942", "camt.052", shall be used. The criterion is fulfilled if a related report is available. If the related report format is not supported, then the ASPSP is rejecting the subscription with a dedicated error code.. |
| statements | Max35Text | OR} | One of the values "MT940", and "camt.053" shall be used. The criterion is fulfilled if a related statement is available. If the related statement format is not supported, then the ASPSP is rejecting the subscription with a dedicated error code. |
| event | Max35Text | Optional | Only the value "afterGeneration" may be used. The criterion is fulfilled if the related report is generated and made available to the PSU in the online channel. |

| Attribute | Type | Condition | Description |
|-----------|-------------------|-----------|---|
| times | Array of ISO Time | Optional | The value is provided in format "hh:mm:ss". The criterion is fulfilled if the current local ASPSP time is matching one of the defined times in the list of times. The list shall not be empty. |

7.6 Push Balance Parameters

| Attribute | Type | Condition | Description |
|-----------------|--------------------------|-----------|---|
| balanceCriteria | Balance Trigger Criteria | Mandatory | This attribute is defining the balance information to be pushed to the API Client push URI: Every time, a balance is fulfilling all the criteria listed in this attribute it is pushed. |

7.7 Balance Trigger Criteria

| Attribute | Type | Condition | Description |
|-----------------|--------------|-----------|---|
| balanceAmount | Amount | Optional | The criterion is fulfilled if the current balance of type balanceType provided below fulfills the balanceOperator requirement provided below together with the provided balanceAmount in this attribute and where the last provided balance did not fulfill it. |
| balanceOperator | Max35Text | Optional | Must be one of the following codes: <ul style="list-style-type: none"> • less, • lessOrEqual, • equal, • greaterOrEqual, • greater |
| balanceType | Balance Type | Optional | This criterion is fulfilled if the balance is of this type. If the related balance type is not supported for the addressed |

| Attribute | Type | Condition | Description |
|---------------------|-------------------|-----------|--|
| | | | account, then the ASPSP is rejecting the subscription with a dedicated error code. |
| creditLimitIncluded | Boolean | Optional | <p>This criterion is fulfilled if the related current balance is provided with the credit limit included (if this attribute is true) or not (if this attribute is false).</p> <p>If the attribute is true and if the related balance type defined above is not applicable to the condition whether a credit limit is included then the subscription is rejected with a dedicated error code.</p> |
| times | Array of ISO Time | Optional | <p>The value is provided in format "hh:mm:ss". The criterion is fulfilled if the current local ASPSP time is matching one of the defined times in the list of times.</p> <p>The list shall not be empty.</p> |

7.8 pushRtpParameters

| Attribute | Type | Condition | Description |
|----------------|----------------------|-----------|---|
| rtpCriteria | RTP Trigger Criteria | Optional | <p>This attribute is defining the incoming RTP requests to be pushed to the API Client push URI: All RTPs which are fulfilling all the criteria listed in this attribute will be pushed.</p> <p>If the attribute is not provided, all RTPs will be pushed as soon as they are arriving at the ASPSP's system.</p> |
| acceptedFormat | Mime Type Code | Mandatory | This is defining the mime type. If the requested mime type is not supported by the ASPSP, the request is rejected. If not used, |

| Attribute | Type | Condition | Description |
|--------------------|---------|-----------|--|
| | | | then the ASPSP is choosing the mime type. At a minimum the ASPSP shall support a JSON mime type. |
| documentsPreferred | Boolean | Optional | RFU: This data element indicates that the API Client prefers to also receive documents attached to an RTP. This data attribute might be ignored by the ASPSP. |

7.9 RTP Trigger Criteria

| Attribute | Type | Condition | Description |
|----------------|-----------|-----------|---|
| event | Max35Text | Optional | "afterReception" is the only supported value. |
| timeToExpire | Integer | Optional | only forward incoming RTP with an expiry timestamp within that period, where the period is defined by the number of minutes as provided in this attribute. This criterion is meant to forward only short term RTPs. |
| expiryReminder | Integer | Optional | This criterion is fulfilled if a long term RTP is still not confirmed 2 days before the RTP expires |

7.10 Transactions

This is an extension of the current Transactions data type as provided by [XS2A-IG]. Additional attributes are marked by **yellow color**.

| Attribute | Type | Condition | Description |
|---------------|--------|-----------|---|
| transactionId | String | Optional | Can be used as access-ID in the API, where more details on a transaction is offered. If this data attribute is provided this shows that the AIS can get access on more details about this transaction using the |

| Attribute | Type | Condition | Description |
|----------------------------|-------------------------------|-------------|---|
| | | | GET Transaction Details Request as defined in Section 6.5.5 |
| entryReference | Max35Text | Optional | Is the identification of the transaction as used e.g. for reference for deltafunction on application level. The same identification as for example used within camt.05x messages. |
| batchIndicator | Boolean | Optional | If this indicator equals <code>true</code> , then the related entry is a batch entry. |
| batchNumberOf Transactions | Integer | Conditional | Shall be used if and only if the <code>batchIndicator</code> is contained and equals <code>true</code> . |
| endToEndId | Max35Text | Optional | Unique end to end identity. |
| mandateId | Max35Text | Optional | Identification of Mandates, e.g. a SEPA Mandate ID |
| checkId | Max35Text | Optional | Identification of a Cheque |
| creditorId | Max35Text | Optional | Identification of Creditors, e.g. a SEPA Creditor ID |
| bookingDate | ISODate | Optional | The Date when an entry is posted to an account on the ASPSPs books. |
| valueDate | ISODate | Optional | Date at which assets become available to the account owner in case of a credit entry, or cease to be available to the account owner in case of a debit entry. Usage: If entry status is pending and value date is present, then the value date refers to an expected/requested value date. |
| transactionAmount | Amount | Mandatory | The amount of the transaction or batch as billed to the account. |
| currencyExchange | Array of Report Exchange Rate | Optional | |
| creditorName | Max70Text | Optional | Name of the creditor if a "Debited" transaction |



| Attribute | Type | Condition | Description |
|---|------------------------------|-------------|---|
| creditorAdditional Information | Additional Party Information | Optional | |
| creditor Account | Account Reference | Conditional | |
| creditorAgent | BICFI | Optional | |
| ultimate Creditor | Max70Text | Optional | |
| ultimateCreditor AdditionalInformation | Additional Party Information | Optional | |
| debtorName | Max70Text | Optional | Name of the debtor if a "Credited" transaction |
| debtorAccount | Account Reference | Conditional | |
| debtorAgent | BICFI | Optional | |
| ultimateDebtor | Max70Text | Optional | |
| remittance Information Unstructured | Max140Text | Optional | |
| remittance Information Unstructured Array | Array of Max140Text | Optional | Remark for Future: In version 2.0 these two unstructured remittance fields might be merged. |
| Remittance Information Structured | Max140Text | Optional | Reference as contained in the structured remittance reference structure (without the surrounding XML structure). Remark For Future: This field will be re-typed in a future version of the interface to the structured data type Remittance or might be omitted. For migration reasons, this is not supported in version 1.3.x. |
| remittance Information | Array of Remittance | Optional | NOTE: |

| Attribute | Type | Condition | Description |
|----------------------------------|-----------------------------------|-------------|--|
| Structured Array | | | <p>More details about the Remittance Data Type will be published in an Errata in due course.</p> <p>For usage of the fields e.g. for domestic elements, Berlin Group should be contacted. This would enable to publish usage of structured remittance information in the domestic payment documentation, cp. [XS2A-DP].</p> |
| entryDetails | Array of Entry Details | Optional | Might be used by the ASPSP to transport details about transactions within a batch. |
| additionalInformation | Max500Text | Optional | Might be used by the ASPSP to transport additional transaction related information to the PSU |
| additionalInformation Structured | Structured Additional Information | Conditional | Is used if and only if the bookingStatus entry equals "information". Every active standing order related to the dedicated payment account result into one entry. |
| purposeCode | Purpose Code | Optional | |
| bank TransactionCode | Bank Transaction Code | Optional | <p>Bank transaction code as used by the ASPSP and using the sub elements of this structured code defined by ISO20022.</p> <p>For standing order reports the following codes are applicable:</p> <p>"PMNT-ICDT-STDO" for credit transfers,</p> <p>"PMNT-IRCT-STDO" for instant credit transfers</p> <p>"PMNT-ICDT-XBST" for cross-border credit transfers</p> <p>"PMNT-IRCT-XBST" for cross-border real time credit transfers and</p> <p>"PMNT-MCOP-OTHR" for specific standing orders which have a dynamical amount to move left funds e.g. on month end to a saving account</p> |

| Attribute | Type | Condition | Description |
|------------------------------------|-----------|-----------|---|
| proprietaryBank TransactionCode | Max35Text | Optional | proprietary bank transaction code as used within a community or within an ASPSP e.g. for MT94x based transaction reports For RTP, the value "incomingRTP" is used. |
| balanceAfter Transaction | Balance | Optional | This is the balance after this transaction. Recommended balance type is interimBooked. |
| _links | Links | Optional | The following links could be used here: transactionDetails for retrieving details of a transaction. |

7.11 Structured Additional Information

This is an extension of the current Transactions data type as provided by [XS2A-IG]. Additional attributes are marked by **yellow color**.

| Attribute | Type | Condition | Description |
|----------------------|------------------------|-----------|--|
| standingOrderDetails | Standing Order Details | {OR | Details of underlying standing orders. |
| rtпDetails | RTP Details | OR} | Details of underlying incoming RTPs |

7.12 RTP Details

| Attribute | Type | Condition | Description |
|-----------------------------|--------------------|-----------|--|
| paymentConditions | Payment Conditions | optional | Conditions for the execution of the payment. |
| creationDateTime | ISODateTime | optional | creationDateTime of the originator |
| requestedExpiry DateTime | ISODateTime | mandatory | Date and Time at which this request expires. |

| Attribute | Type | Condition | Description |
|-----------------|--------------------------------------|-----------|---|
| originatorPspId | Financial Institution Identification | Optional | Originator payment service provider in case of indirect participation regarding a related API Access Scheme or bilateral contract |

7.13 Subscription Status

| Code | Description |
|---------------------|--|
| received | The subscription data have been received and are technically correct. The data is not authorised yet. |
| rejected | The subscription data have been rejected e.g. since no successful authorisation has taken place. |
| partiallyAuthorised | The subscription is due to a multi-level authorisation, some but not all mandated authorisations have been performed yet. |
| valid | The subscription is accepted and valid for the related subscribed services as specified in the subscription object. |
| validInChange | The subscription is accepted and valid for the related subscribed services as specified in the subscription object. A new subscription entry has been submitted which is not yet (fully) authorised. |
| revokedByPsu | The subscription has been revoked by the PSU towards the ASPSP. |
| cancelledByAspsp | The subscription has been cancelled by the ASPSP. |
| expired | The subscription expired. |
| terminatedByTpp | The corresponding TPP has terminated the subscription by applying the DELETE method to the subscription resource. |

The ASPSP might add further codes. These codes then shall be contained in the ASPSP's documentation of the XS2A interface.

7.14 Subscription Entry Status

| Code | Description |
|----------|---|
| received | The subscription data have been received and are technically correct. The data is not authorised yet. |

| Code | Description |
|---------------------|---|
| rejected | The subscription data have been rejected e.g. since no successful authorisation has taken place. |
| partiallyAuthorised | The subscription is due to a multi-level authorisation, some but not all mandated authorisations have been performed yet. |
| valid | The subscription is accepted and valid for the related subscribed service as specified in the subscription object. |
| revokedByPsu | The subscription has been revoked by the PSU towards the ASPSP. |
| expired | The subscription expired. |
| terminatedByTpp | The corresponding TPP has terminated the subscription by applying the DELETE method to the subscription resource. |

7.15 Credit Debit Code

| Code | Description |
|------|---------------------------|
| CRDT | Operation is an increase. |
| DBIT | Operation is a decrease. |

7.16 Account Entry Status

| Code | Description |
|---------|---|
| booked | Entry is booked on the account. |
| pending | Entry is pending, funds might be reserved or not. |

7.17 Mime Type Code

| Code | Description |
|------------------|---|
| application/JSON | Mime type for body encoding in JSON syntax. |
| application/XML | Mime type for body encoding in XML syntax. |
| plain/text | Mime type for body encoding in text. |

7.18 Links

The structure of Links is compliant to [HAL]. There are some new entries (marked in yellow color) relative to the definition in [XS2A-IG]. Please note that now also Arrays of links are supported for certain link types.

| Attribute | Type | Condition | Description |
|---|-----------|-----------|--|
| scaRedirect | href Type | Optional | A link to an ASPSP site where SCA is performed within the Redirect SCA approach. |
| scaOAuth | href Type | Optional | The link refers to a JSON document specifying the OAuth details of the ASPSP's authorisation server. JSON document follows the definition given in [RFC8414] |
| confirmation | href Type | Optional | "confirmation": Might be added by the ASPSP if either the "scaRedirect" or "scaOAuth" hyperlink is returned in the same response message. This hyperlink defines the URL to the resource which needs to be updated with <ul style="list-style-type: none"> • a confirmation code as retrieved after the plain redirect authentication process with the ASPSP authentication server or • an access token as retrieved by submitting an authorization code after the integrated OAuth based authentication process with the ASPSP authentication server. |
| startAuthorisation | href Type | Optional | A link to an endpoint, where the authorisation of a transaction or the authorisation of a transaction cancellation shall be started with a POST command. No specific data is needed for this process start. |
| startAuthorisationWithPsuIdentification | href Type | Optional | The link to an endpoint where the authorisation of a transaction or of a transaction cancellation shall be started, where PSU identification shall be uploaded with the corresponding call. |
| updatePsuIdentification | href Type | Optional | The link to the payment initiation or account information resource, which needs to be updated by the PSU identification if not delivered yet. |

| Attribute | Type | Condition | Description |
|--|-----------|-----------|---|
| startAuthorisationWithProprietaryData | hrefType | Optional | <p>A link to the endpoint, where the authorisation of a transaction or of a transaction cancellation shall be started, and where proprietary data needs to be updated with this call. The TPP can find the scope of missing proprietary data in the ASPSP documentation.</p> <p>The usage of this hyperlink is not further specified in the specification but is used analogously to e.g. the startAuthorisation withPsuIdentification hyperlink.</p> |
| updateProprietaryData | href Type | Optional | The link to the payment initiation or account information resource, which needs to be updated by the proprietary data. |
| startAuthorisationWithPsuAuthentication | href Type | Optional | The link to an endpoint where the authorisation of a transaction or of a transaction cancellation shall be started, where PSU authentication data shall be uploaded with the corresponding call. |
| updatePsuAuthentication | href Type | Optional | The link to the payment initiation or account information resource, which needs to be updated by a PSU password and eventually the PSU identification if not delivered yet. |
| updateAdditionalPsuAuthentication | href Type | Optional | The link to the payment initiation or account information resource, which needs to be updated by an additional PSU password. |
| startAuthorisationWithEncryptedPsuAuthentication | href Type | Optional | The link to an endpoint where the authorisation of a transaction or of a transaction cancellation shall be started, where encrypted PSU authentication data shall be uploaded with the corresponding call. |
| updateEncryptedPsuAuthentication | href Type | Optional | The link to the payment initiation or account information resource, which needs to be updated by an encrypted PSU password and eventually the PSU identification if not delivered yet. |
| updateAdditionalEncryptedPsuAuthentication | href Type | Optional | The link to the payment initiation or account information resource, which needs to be updated by an additional encrypted PSU password. |



| Attribute | Type | Condition | Description |
|---|-----------|-----------|--|
| startAuthorisationWithAuthenticationMethodSelection | href Type | Optional | This is a link to an endpoint where the authorisation of a transaction or of a transaction cancellation shall be started, where the selected SCA method shall be uploaded with the corresponding call. |
| selectAuthenticationMethod | href Type | Optional | This is a link to a resource, where the TPP can select the applicable second factor authentication methods for the PSU, if there were several available authentication methods. |
| startAuthorisationWithTransactionAuthorisation | href Type | Optional | A link to an endpoint, where an authorisation of a transaction or a cancellation can be started, and where the response data for the challenge is uploaded in the same call for the transaction authorisation or transaction cancellation at the same time in the Embedded SCA Approach. |
| authoriseTransaction | href Type | Optional | The link to the payment initiation or consent resource, where the "Transaction Authorisation" Request is sent to. This is the link to the resource which will authorise the payment or the consent by checking the SCA authentication data within the Embedded SCA approach. |
| self | href Type | Optional | The link to the payment initiation resource created by the request itself. This link can be used later to retrieve the transaction status of the payment initiation. |
| status | href Type | Optional | A link to retrieve the status of the transaction resource. |
| scaStatus | href Type | Optional | A link to retrieve the status of the authorisation or cancellation-authorisation sub-resource. |
| account | href Type | Optional | A link to the resource providing the details of one account |
| balances | href Type | Optional | A link to the resource providing the balance of a dedicated account. |
| transactions | href Type | Optional | A link to the resource providing the transaction history of a dedicated account. |

| Attribute | Type | Condition | Description |
|--------------------|--------------------|-----------|---|
| cardAccount | href Type | Optional | A link to the resource providing the details of one card account. |
| cardTransactions | href Type | Optional | A link to the resource providing the transaction history of a dedicated card account. |
| transactionDetails | href Type | Optional | A link to the resource providing details of a dedicated transaction. |
| first | href Type | Optional | Navigation link for paginated account reports. |
| next | href Type | Optional | Navigation link for paginated account reports. |
| previous | href Type | Optional | Navigation link for paginated account reports. |
| last | href Type | Optional | Navigation link for paginated account reports. |
| download | href Type | Optional | Download link for huge AIS data packages. |
| entryStatusRevoked | Array of href Type | Optional | Links to entry status endpoints where the entry status is revoked. |

7.19 Lean Account Report

| Attribute | Type | Condition | Description |
|-------------|-----------------------|-------------|---|
| booked | Array of transactions | Conditional | booked entries on the related account |
| pending | Array of transactions | Optional | pending entries on the related account |
| information | Array of transactions | Optional | information entries related to the addressed account. |

8 References

- [XS2A-OR] NextGenPSD2 XS2A Framework, Operational Rules, The Berlin Group Joint Initiative on a PSD2 Compliant XS2A Interface, version 1.3., published December 2019
- [XS2A-IG] NextGenPSD2 XS2A Interoperability Framework, Implementation Guidelines, The Berlin Group Joint Initiative on a PSD2 Compliant XS2A Interface, version 1.3.11, published 24 September 2021
- [oFA-PDM-V2] openFinance API Framework, Payment Data Model for Version 2.x, version 1.0, 24 September 2021
- [oFA-OR-PAIS] openFinance API Framework, Operational Rules, Push Account Information Services, Version 1.0, published 21 December 2021
- [oFA-OR-ADM] openFinance API Framework, Operational Rules for Administrative Service, Version 0.9, published for market consultation 26 May 2021
- [oFA-RSNS] openFinance API Framework, Extended Services, Resource Status Notification Service, Version 1.2., published 24 September 2021
- [EBA-RTS] Commission Delegated Regulation (EU) 2018/389 of 27 November 2017 supplementing Directive 2015/2366 of the European Parliament and of the Council with regard to Regulatory Technical Standards for Strong Customer Authentication and Common and Secure Open Standards of Communication, C(2017) 7782 final, published 13 March 2018
- [eIDAS] Regulation (EU) No 910/2014 of the European Parliament and of the Council on Electronic Identification and Trust Services for Electronic Transactions in the Internal Market, 23 July 2014, published 28 August 2014
- [PSD2] Directive (EU) 2015/2366 of the European Parliament and of the Council on payment services in the internal market, published 23 December 2015
- [HAL] Kelley, M., "HAL - Hypertext Application Language", 2013-09-18, http://stateless.co/hal_specification.html
- [RFC2426] Dawson, F. and T. Howes, T., "vCard MIME Directory Profile", September 1998, <https://tools.ietf.org/html/rfc2426>
- [RFC3230] Mogul, J. and A. Van Hoff, "Instance Digests in HTTP", RFC 3230, DOI 10.17487/RFC3230, January 2002, <https://www.rfc-editor.org/info/rfc3230>
- [RFC4648] Josefsson, S., "The Base16, Base32, and Base64 Data Encodings", October 2006, <https://tools.ietf.org/html/rfc4648>
- [RFC5843] Bryan, A, "Additional Hash Algorithms for HTTP Instance Digests", RFC 5843, DOI 10.17487/RFC5843, April 2010, <https://www.rfc-editor.org/info/rfc5843>



- [RFC6749] Hardt, D., "The OAuth 2.0 Authorization Framework", October 2012, <https://tools.ietf.org/html/rfc6749>
- [RFC7807] M. Nottingham, Akamai, E. Wilde, „Problem Details for HTTP APIs", March 2016, <https://tools.ietf.org/html/rfc7807>

